

# CARRY ON KELMARSH

A SAFE AND SPACIOUS, PRE-PITCHED CAMPING  
EXPERIENCE AT THE HOME OF  
SHAMBALA FESTIVAL



# WELCOME TO A NEW ADVENTURE

A series of fabulous 4-day,  
3-night boutique camping  
experiences for like-minded  
souls this August, on the  
Weekends of 7-10<sup>th</sup>, 14<sup>th</sup> - 17<sup>th</sup>  
and 21<sup>st</sup> - 24<sup>th</sup>.

Carry On Kelmarsh is  
designed to deliver an  
easy, safe and well provisioned  
return to the great outdoors.





# THE SPACE

This is a unique opportunity to camp at Kelmarsh Estate – home of Shambala, with 200 acres of space, a stunning lake, majestic woodlands and beautiful gardens in full summer bloom. The campsite will fan out from the main lake with countryside views all around, with the Kelmarsh Hall and the enchanted woods in the foreground

## THE ACCOMODATION

- There are 3 types of glamping experiences available Vintents, Yurts or Bell Tents
- Unfurnished and furnished options available
- Pre- allocated and marked pitches that are spaced generously\*
- A range of options from 2 – 6 berth
- Access to the site for the corresponding number of persons for four days
- BYO tent option available as an add-on to a booked pre-pitched package\*\*

## THE FACILITIES

- Private portable toilet facilities per pitch\*\*\*
- Serviced and attended showers
- Delicious food & drinks - take-away and delivery to your pitch
- Safe compliant and socially distant activities

\* Pitches sizes range from 10 x 10m to 12 x 12m in size, with at least 10m to the adjacent pitch.

\*\* Maximum of 3 extra persons in 1 single tent that must fit within your pitch (guy ropes included).

\*\*\* Charged separately from the accommodation package  
At £60 per pitch



# VINTENTS



What could be more Carry On Kelmarsh than the VINTENTS collection of vintage canvas tents?

Each is truly one of a kind, with its own vibrant colour scheme and retro patterns.

They all have a full standing height living area and cotton canopied sleeping compartments making them the perfect mix of practical and cosy.

**All prices listed are GROSS and include booking fees.**



# VINTENTS PACKAGES

## CLASSIC PACKAGE

- No beds
- Your vintage canvas frame tent
- (full standing height)
- Ground-sheeted living area
- Cotton canopied sleeping compartment(s)
- LED lamp & door mat

## COMFY PACKAGE

- Tent Package plus..
- Quality comfy airbeds corresponding to the berth size
- Bedding (13.5tog duvet, pillow, fresh linen & blanket)
- Low table

## LUXURY PACKAGE

- Tent Package plus..
- Memory foam mattresses corresponding to the berth size
- Bedding (13.5tog duvet, pillow, fresh linen & blanket)
- Natural jute & sheepskin rugs
- Colourful cushions
- Additional fairy lights
- Handmade wooden table
- Faux plant

PACKAGE	2 person	3 person	4 person	5 person	6 person
CLASSIC	£272	£378	£460	£520	£565
COMFY	£335	£430	£520	£623	£725
LUXURY	£398	£514.50	£623	£715	£805



# YURTS & GERS

Yurt packages are only available furnished.

They range from 10 ft *mini's* to the *deluxe* 18 ft Mongolian Ger.

All yurt packages include mattresses, bedding, blankets, cushions, wooden doors, flooring, tables, mirrors, wall hangings, rugs, bedside & fairy lights!

Prices listed are GROSS and include booking fees.

YURT SIZE	Persons	Price
10 ft Mini (2 x single raised beds)	2	£398
12 ft Luxury (1 x raised double bed)	2	£440
14 ft Luxury (1 x full height double + raised single)	3	£565
16 ft Luxury (1 x full height double + 2 x raised single)	4	£670
18 ft Deluxe (1 x full height double + 2 x raised single)	4	£750

# BELL TENTS

Available both unfurnished and furnished this economical range is market leading in quality. All new season tents, bespoke and designed by our supplier. Stronger, warmer and safer canvas than most on the market, with upgraded poles, metal fittings & zips.

Unfurnished they come in two sizes 4 and 5 metre and include flooring, exterior bunting & fairy lights. Luxury Bell Tents include beds with 'proper' mattresses, tables, lighting, bedding, blankets, cushions and a rug.

**All prices listed below are GROSS and include booking fee.**

BELL TENT	Persons	Price
4 metre unfurnished 2 berth	2	£209.60
4 metre unfurnished 3 berth	3	£252
5 metre unfurnished – 4 berth	4	£295
5 metre unfurnished – 5 berth	5	£335
4 metre luxury – 2 raised singles	2	£315
4 metre luxury – full height double	2	£398



# ACTIVITIES

Carry On Kelmarsh is very much a campsite retreat. It's about enjoying the natural beauty of the estate, in a well-managed safe environment. There will be some complimentary activities to enjoy, but please do not book expecting a festival.

The campsite will follow current government and local authority guidelines in relation to all operational, hygiene and safety issues and we will be updating our activity lists all the time.

## What we can say for now..

- The best in pop up festival food, from a select few traders
- Takeaway and delivery services including wood fired pizzas to your pitch!
- Guided access through the exquisite gardens on the Saturday
- Small group, distanced wellbeing activities
- Woodland trails and suggested walks
- Lakeside lazing (with optional fishing)
- Family friendly artistic installations
- Suggestions for off site visits and activities
- Our normally behind the scenes vintage Shambala Crew Bus Bar offering a range of quality drinks to take away, or for delivery to you!

Information will be updated all the time and options will be sent directly to customers ahead of arrival.



# YOUR SAFETY COMES FIRST

We have designed a safe camping environment for you, your family and friends. We will implement all relevant government regulations and advice as well as ensuring all our service providers are COVID-19 compliant.

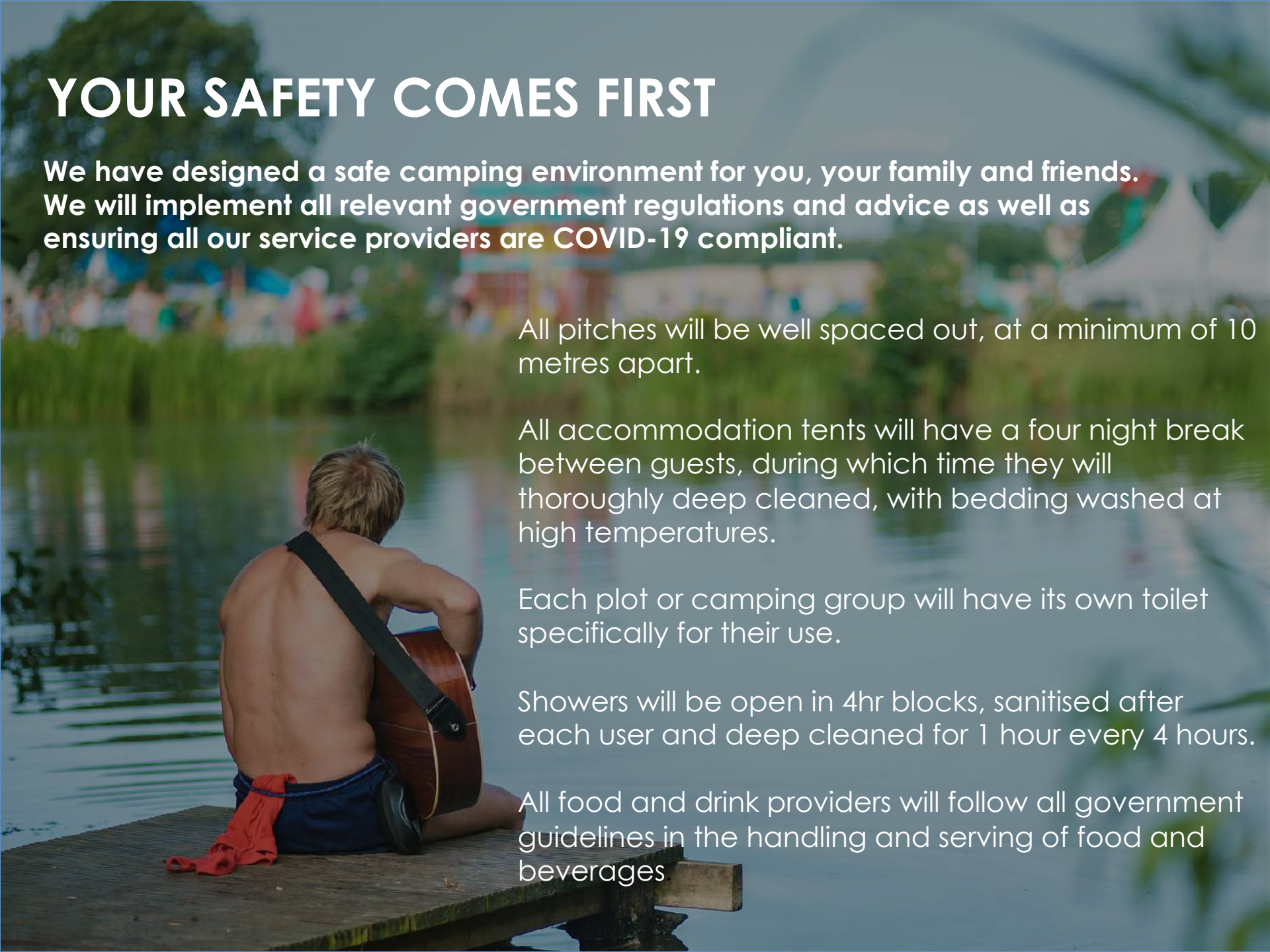
All pitches will be well spaced out, at a minimum of 10 metres apart.

All accommodation tents will have a four night break between guests, during which time they will thoroughly deep cleaned, with bedding washed at high temperatures.

Each plot or camping group will have its own toilet specifically for their use.

Showers will be open in 4hr blocks, sanitised after each user and deep cleaned for 1 hour every 4 hours.

All food and drink providers will follow all government guidelines in the handling and serving of food and beverages.





# MAYBE SEE YOU IN A FIELD AFTER ALL!

We want to create the best camping experience possible, supporting Kambe Events Ltd, the estate and some of our crew and suppliers along the way.

This is (hopefully) a once in lifetime opportunity to experience the natural beauty of the Kelmarsh event site, it's 200 acres of grounds, woodlands and beautiful gardens in full Summer bloom. We must keep *carrying on!*

**We also understand it is a difficult and uncertain time for everyone. As such all bookings come with a full money back guarantee should Kambe have to cancel due to a second wave of COVID infections.**

Anyone displaying any symptoms of COVID-19 should not attend. To support this, anyone who books and then is unable to come due to medical and government instruction regarding the ongoing Coronavirus pandemic will also be refunded.

All subject to license, approval and change